



We operate anywhere in the South Pacific Basin

0800 NZIA (0800 694 258) +64 27 4939 177 24 HOURS

Client Carter Holt Harvey

Location Tokoroa

Contract Annual Plant Shutdown
Inspection & Maintenance
and 75m Stack Inspection



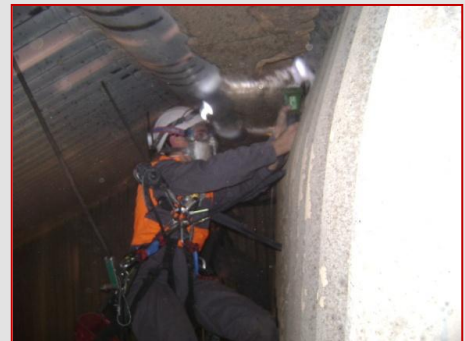
Project Scope

The annual shutdowns on the plant are normally 7 days running 24hrs a day, they are very intensely programmed and are heavily dependent on all the contractors involved meeting their deadlines, which I am very proud to say that NZIA has met every time.



These shut downs involve NZIA carrying out a couple of key tasks in the shutdown:

- Supplying Access into the top areas of the Boilers to enable SGS Inspectors to gain access and check the boiler tubes and also giving access for site engineers to view and solve any issues that may be found.
- Carrying out light engineering repairs on the boiler
- Various maintenance tasks, and repair work throughout the shutdown
- Video Inspection of a 75m stack within a time frame of 8 hrs maximum





We operate anywhere in the South Pacific Basin

0800 NZIA (0800 694 258) +64 27 4939 177 24 HOURS

We have proved ourselves in this very intense environment to be solid hard working contractors that CHH rely on for critical elements of their shutdowns. We are already programmed into their ongoing shutdowns.